



Watling Street, Radlett, WD7 7JG

£1,550 PCM

IMMEDIATELY AVAILABLE TWO BED APARTMENT WITH GARAGE. A charming and newly decorated top floor 2 bed apartment situated in a prime Radlett location just a three minute walk from local shops and five minute walk from the station, making it ideal for commuters.

The property offers bright and well presented accommodation with excellent natural light, separate kitchen, gas central heating and a bath with shower over, along with ample communal parking and a separate garage.

Further benefits include stunning and well maintained communal gardens to the rear, all set within a quiet and well-kept development.

Available immediately

- **Two Bedroom Apartment**
- **Top Floor**
- **Separate Kitchen**
- **Newly Decorated**
- **Gas Central Heating**
- **Ample Car Parking**
- **Garage**
- **Immediately**

VIEWING

Strictly by appointment with Susmans Estates

Tel: 01923 859444

299 Watling Street
Radlett
WD7 7LA

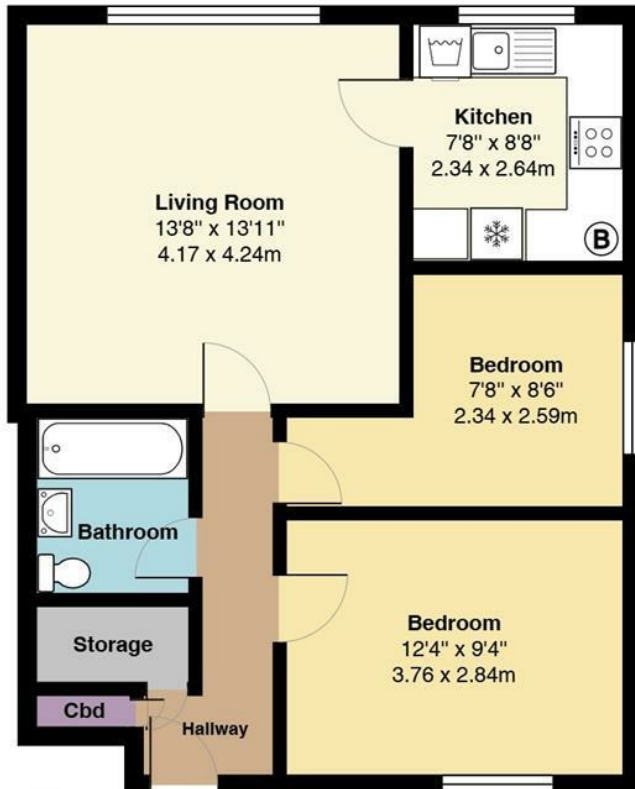
E-mail:

office@susmansestates.com

Website:

susmansestates.com

Ref:



Second Floor

Area: 591 ft² ... 54.9 m²

Total Area: 591 ft² ... 54.9 m²

All measurements are approximate and for display purposes only

SUSMANS
ESTATES

